

**ChromoGel™****Urine Agar**

ChromoGel Urine Agar is a chromogenic medium used for the cultivation and isolation of pathogen bacteria from urine samples

Formula	g/l
Peptones, Yeast extract	20.5
Growth factor	15
Chromogenic mix	4
Bacteriological agar	12.5
<b>Total</b>	<b>52</b>
<b>pH: 7.0 ± 0.2 at 25°C</b>	

**Preparation**

- # Dissolve 52g in 1000ml of distilled water (purified water)
- # Heat and frequent stirring to completely dissolve the medium
- # Autoclave at 121°C for 15 minutes
- # Mix well and dispense into appropriate sterile containers

**Quality Control (37°C-24 H)**

Organism	Ref. No.	Result
S.aureus	ATCC 25923	Cream colonie
S.saprophyticus	ATCC 15305	Opaque pink colonies
Streptococcus agalactiae	ATCC 12386	Pale turquoise colonies
E.coli	ATCC 8739	Purple colonies
E.aerogenes	ATCC 13048	Metallic blue colonies
Salmonella typhimurium	ATCC 14028	Colourless colonies
Proteus mirabilis	ATCC 14153	Colourless colonies w brown halo
Pseudomonas aeruginosa	ATCC 9027	Colourless colonies
Klebsiella pneumoniae	ATCC 13883	Metallic blue colonies
Enterococcus faecalis	ATCC 29212	Blue/turquoise colonies
Candida albicans	ATCC 10231	Colourless colonies

**Storage**

Store the medium tightly closed in a dry place at room temperature and use before the expiry date on the label.

Store temperature: 2-30°C

**Ordering information**

Code	Products	Package
CGURI400	ChromoGel™ Urine Agar	400g/Bottle
CGURI500	ChromoGel™ Urine Agar	500g/Bottle
CGURI9010	ChromoGel™ Urine Agar (90mm)	10Plates/Box
CGURI90100	ChromoGel™ Urine Agar (90mm)	10x10Plates/Box

**ChromoGel™****Urine Agar**

ChromoGel Urine Agar là môi trường sinh màu dùng nuôi cấy phân lập định danh vi khuẩn gây bệnh từ đường tiết niệu

Thành phần	g/l
Peptones, Yeast extract	20.5
Growth factor	15
Chromogenic mix	4
Bacteriological agar	12.5
<b>Total</b>	<b>52</b>
<b>pH: 7.0 ± 0.2 ở 25°C</b>	

**Chuẩn bị**

- # Hòa tan 52g trong 1000ml nước cất (hoặc nước đã lọc)
- # Gia nhiệt và khuấy thường xuyên để môi trường hòa tan hoàn toàn
- # Khử trùng ở 121° C trong 15 phút
- # Lắc đều và rót vào các dụng cụ chứa vô trùng thích hợp

**Quality Control (37°C-24 H)**

Organism	Ref. No.	Result
S.aureus	ATCC 25923	Cream colonie
S. saprophyticus	ATCC 15305	Opaque pink colonies
Streptococcus agalactiae	ATCC 12386	Pale turquoise colonies
E.coli	ATCC 8739	Purple colonies
E.aerogenes	ATCC 13048	Metallic blue colonies
Salmonella typhimurium	ATCC 14028	Colourless colonies
Proteus mirabilis	ATCC 14153	Colourless colonies w brown halo
Pseudomonas aeruginosa	ATCC 9027	Colourless colonies
Klebsiella pneumoniae	ATCC 13883	Metallic blue colonies
Enterococcus faecalis	ATCC 29212	Blue/turquoise colonies
Candida albicans	ATCC 10231	Colourless colonies

**Bảo Quản:**

Bảo quản môi trường ở nơi khô ráo, tránh ánh sáng và sử dụng trước hạn dùng.

Nhiệt độ bảo quản: 2-30°C

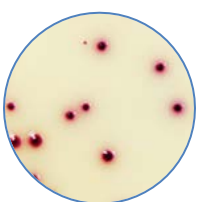
**Thông tin đặt hàng**

Code	Products	Package
CGURI400	ChromoGel™ Urine Agar	400g/Bottle
CGURI500	ChromoGel™ Urine Agar	500g/Bottle
CGURI9010	ChromoGel™ Urine Agar (90mm)	10Plates/Box
CGURI90100	ChromoGel™ Urine Agar (90mm)	10x10Plates/Box

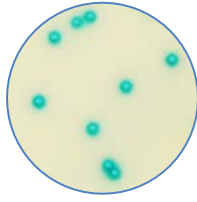
ChromoGel™ Urine Agar



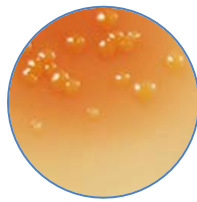
➤ Direct Identification by colour colonies



*E.coli*

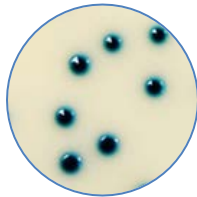


*Enterococcus spp*

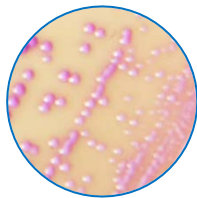


*Proteus mirabilis*

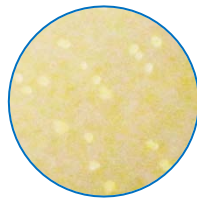
➤ Identification KESC group, Staphylococcus, Streptococcus, Candida



<i>KESC Group confirmation</i>	Indole	Urea
<i>Klebsiella pneumoniae</i>	-	+
<i>Enterobacter cloacae</i>	-	-
<i>Serratia marcescens</i>	-	-
<i>Citrobacter koseri</i>	+	-



*S. Saprophyticus*



*Candida albicans*

<i>Staph. aureus</i>	<i>Strep. agalactiae</i>	<i>P.aeruginosa</i>	<i>Salmonella spp</i>
<i>Staph latex kit (+)</i>	<i>Strep B latex kit (+)</i>	<i>Oxydase (+)</i>	<i>Sal latex kit (+)</i>

